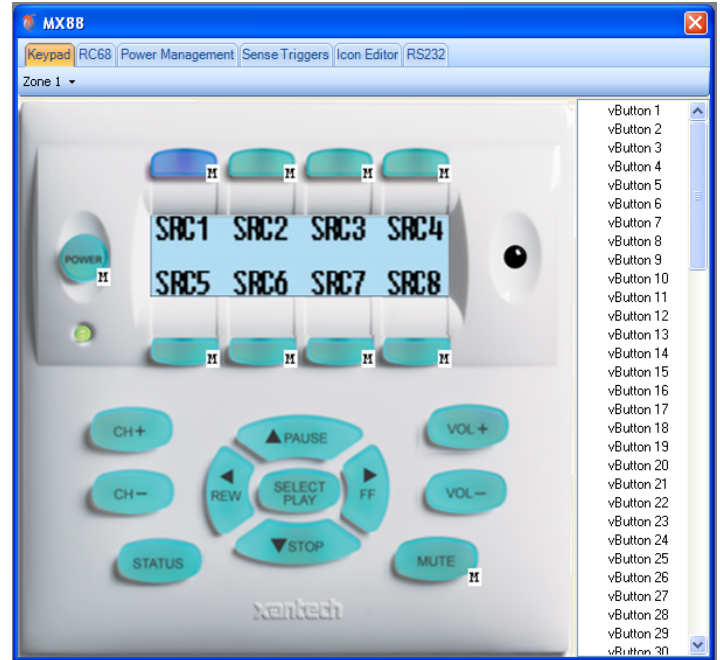


Universal Dragon MX88 Programming Instructions MRKP2 & MRKP2E

INTRODUCTION

The MRKP2 & MRKP2E can be used with the new MX88 as well as the MRC88m and MRAUDIO8x8m (Firmware ver. 3.16 at the time of writing this manual – always check the Xantech web site www.xantech.com to make sure that you are running the latest available firmware version). For the sake of simplicity, we regularly make singular references to MX88 throughout this manual. Please note that these statements apply equally to MRC88m and MRAUDIO8x8m as well. The buttons on the keypad can send individual or macro commands when pressed. To do this, the multi-room controller MX88 must be programmed in Universal Dragon. In Universal Dragon the MRKP2 & MRKP2E is represented by a picture of the older MRC88KP. This should not pose any issues because you are not programming the keypad itself; you are programming the MX88 or MRC88m. The keypads simply send button ID's to the multi-room controller and the multi-room controller then executes the correct macro for a given button ID, regardless of what the actual keypad looks like.



**FIGURE B: Universal Dragon
Image of older MRC88KP**

PROGRAMMING EXPLANATION

For example, the Mute button on the MRKP2/MRKP2E generates the exact same button ID as the Mute button on the MRC88KP, the Power button on the MRKP2/MRKP2E generates the exact same button ID as the Power button on the MRC88KP, etc.

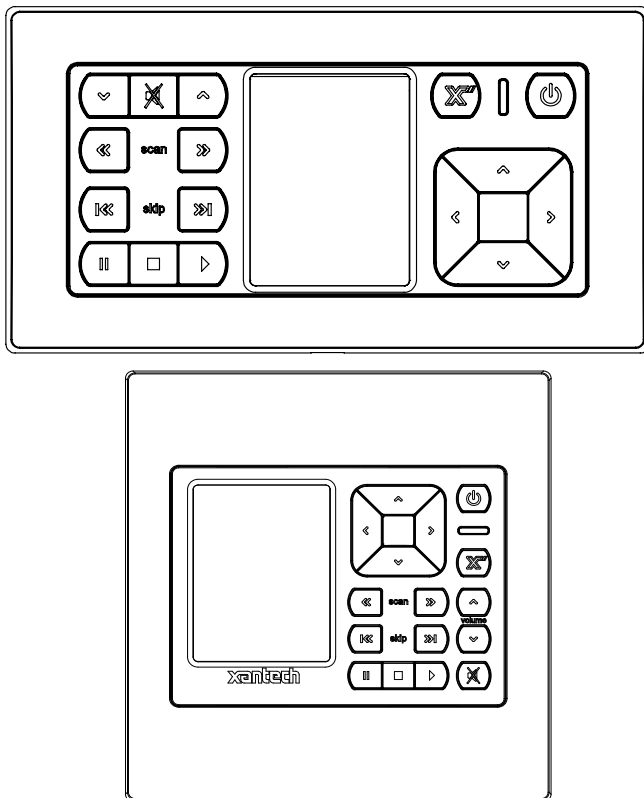
It might help to think of the picture of the MRC88KP as a generic visual representation of any MX/MRC88m keypad, including the MRKP2/MRKP2E.

Important: Please do note, however that the MRKP2/MRKP2E uses a newer, faster keypad communications protocol than the MRC88KP, and therefore the two keypads cannot be used in the same zone together.

To program the macro to be executed when you select Source 1 on the MRKP2/MRKP2E, simply select the Source 1 button on the MRC88KP and build the appropriate macro.

Then, when you select Source 1 on the MRKP2/MRKP2E that is connected to the MRC88m, the multi-room controller will run the macro programmed under the Source 1 button of the MRC88KP that you see in Dragon.

Likewise, when you select Source 2 on the MRKP2/MRKP2E, the multi-room controller will run the



**FIGURE A: Hard Button Layout of
MRKP2E and MRKP2**

macro programmed under the Source 2 button of the MRC88KP.

On all other buttons, please consult the table below for the corresponding buttons. In some cases the corresponding buttons are identified as 'vButton' which can be selected next to the MRC88KP image.

Important: Unlike MRC88KP, and due to the unique and streamlined functional set-up of the MRKP2E's buttons, "press-and-hold" tier 2 functions are not supported. However, Tier 2 button IDs and the macros underneath them are available through Universal Dragon.

Below is a table to help show you how to program the button behavior of the MRKP2/MRKP2E, using the MRC88KP image that is shown in Dragon:

Hard Buttons

MRKP2/E Hard Button	Universal Dragon Button
Power	POWER
Vol +	VOL +
Vol -	VOL -
Mute	MUTE
Arrow Up	PAUSE
Arrow Left	REW
Arrow Right	FF
Arrow Down	STOP
Select	SELECT
Scan Back	REW Tier 2
Scan Forward	FWD Tier 2
Skip Back	CH -
Skip Forward	CH +
Pause	PAUSE Tier 2
Stop	STOP Tier2
Play	SELECT Tier2

Touch-screen Buttons

The buttons on the touch-screen can also be programmed. **Make sure that you give each source button an appropriate name and device type. The device type is important so that the MRKP2/2E will be able to display the correct page(s) in the LCD display. Please see APPENDIX A below for details.** The buttons can be programmed in two ways, either use QuickConfig (see manual available at www.xantech.com) or through Universal Dragon. Be sure the source has been selected in Universal Dragon before programming.

Touch-screen Buttons Set 1a
CD/Tape Source, Main Page



MRKP2/E Button	Dragon Button
Record (Red dot)	vButton 7
Menu	CH+ Tier 2
Exit	Mute Tier 2

Touch-screen Buttons Set 1b
CD/Tape Source, Second Page



MRKP2/E Button	Dragon Button
Slow	vButton 5
Display	vButton 1
Open/Close	vButton 2
Format	vButton 3
SubTitle	vButton 4
Aud/Lang	vButton 6

Touch-screen Buttons Set 2a
Sat/Cable/Sat Radio Source, Main Page



MRKP2/E Button	Dragon Button
Guide	vButton 14
Exit	vButton 15
Last	vButton 17

Touch-screen Buttons Set 2b
Sat/Cable/Sat Radio Source, Second Page



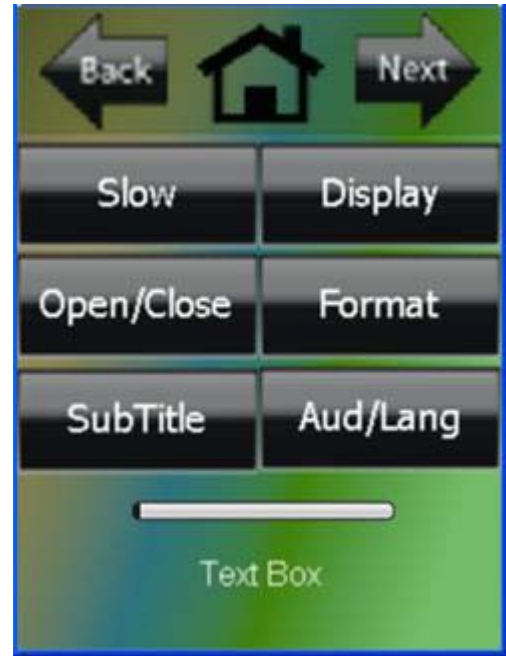
MRKP2/E Button	Dragon Button
1	vButton 1
2	vButton 2
3	vButton 3
4	vButton 4
5	vButton 5
6	vButton 6
7	vButton 7
8	vButton 8
9	vButton 9
0	vButton 10
Enter	Play

Touch-screen Buttons Set 3a
DVR/VCR Source, Main Page



MRKP2/E Button	Dragon Button
Record (Red dot)	vButton 7
Menu	CH+ Tier 2
Exit	Mute Tier 2

Touch-screen Buttons Set 3b
DVR/VCR Source, Second Page



MRKP2/E Button	MX88 Button
Slow	vButton 5
Display	vButton 1
Open/Close	vButton 2
Format	vButton 3
SubTitle	vButton 4
Aud/Lang	vButton 6

Touch-screen Buttons Set 4a
Tuner Source, Main Page



MRKP2 Button	Dragon Button
AM	vButton 10
FM	vButton 11

Touch-screen Buttons Set 4b
Tuner Source, Second Page



MRKP2 Button	Dragon Button
1	Pause Tier 2
2	Fwd Tier 2
3	Stop Tier 2
4	Rew Tier 2
5	CH+ Tier 2
6	CH- Tier 2

Touch-screen Buttons Set 4c
Tuner Source, Third Page



MRKP2 Button	Dragon Button
1	Pause Tier 2
2	Fwd Tier 2
3	Stop Tier 2
4	Rew Tier 2
5	CH+ Tier 2
6	CH- Tier 2

Touch-screen Buttons Set 5
MP3/MusicServer Source, Main Page



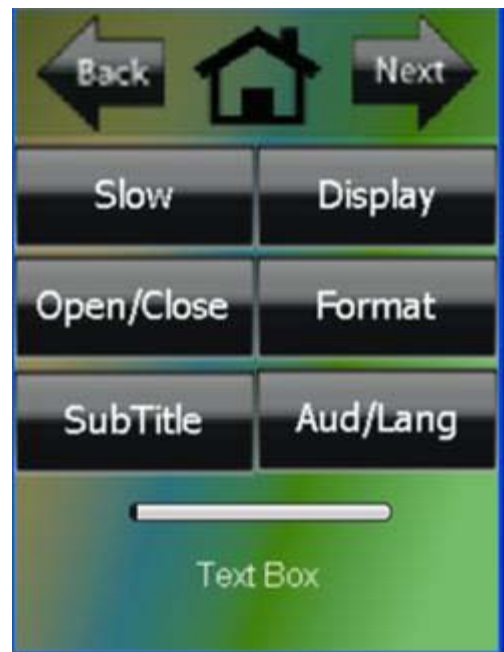
MRKP2 Button	Dragon Button
Double Up Arrow	CH+ Tier 2
Menu	Mute Tier 2
Double Down Arrow	CH- Tier 2

Touch-screen Buttons Set 6a
DVD/Blu-ray Source, Main Page



MRKP2 Button	Dragon Button
S Menu	CH- Tier 2
Exit	Mute Tier 2
D Menu	CH+ Tier 2

Touch-screen Buttons Set 6b
DVD/Blu-ray Source, Second Page



MRKP2 Button	Dragon Button
Slow	vButton 5
Display	vButton 1
Open/Close	vButton 2
Format	vButton 3
SubTitle	vButton 4
Aud/Lang	vButton 6

Touch-screen Buttons Set 7

Generic 1 and Generic 2 Source Main Page



No Buttons to Program

APPENDIX A

Using Auto-configuration with the MRKP2/2E

So what exactly is this “Auto-Configuration” feature?

It is a feature of the MX88/MRC88m that allows a MRKP2/2E to automatically do the following two things:

1. To label its source buttons with names to match the actual source devices that is connected to the MX88/MRC88m.
 - a. For Example, if an XIS100 iPod dock is connected to Source 1 of the MX88/MRC88m, the Source 1 button on the MRKP2/2E could have the label “iPod” on it.
2. To correctly display the pages that match the type of source devices which are connected to the MX88/MRC88m.
 - a. For example if an XIS100 iPod dock is connected to Source 1 of the MX88/MRC88m, the page that is displayed when Source 1 is selected will have a button layout optimized for control of an MP3 player/Music Server.

How does the MRKP2/2E get the information about the MX88/MRC88m Source Devices?

The information about the source devices is sent from the MRC88m to the MRKP2/2E via the normal MX88/MRC88m CAT5 keypad connection during the MX88/MRC88m startup sequence.

Where does the MX88/MRC88m get this Source Device information?

The source device information that is sent from the MX88/MRC88m to the MRKP2/2E is stored in the MX88/MRC88m Dragon project.

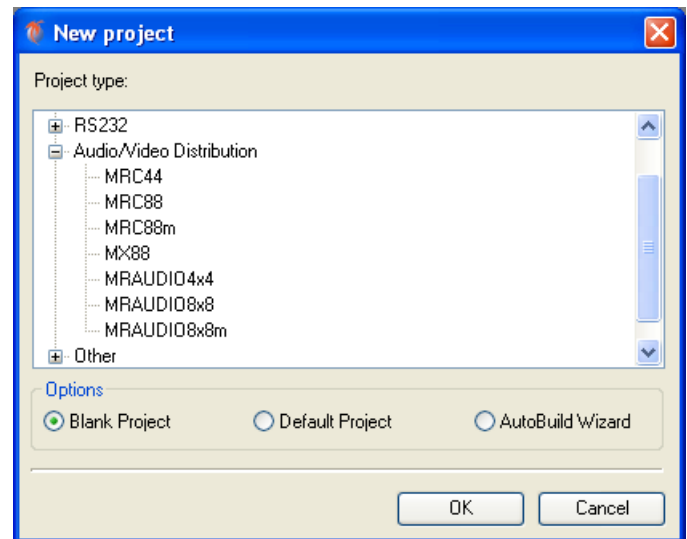
This information is entered into Dragon by the installer during the MX88/MRC88m project creation. It is part of the “Properties” of the Source Button.

Ok, so exactly how do I configure Source 1 on the MRKP2/2E for the XIS100 iPod dock and to have the label “iPod”?

Start Dragon-Drop.

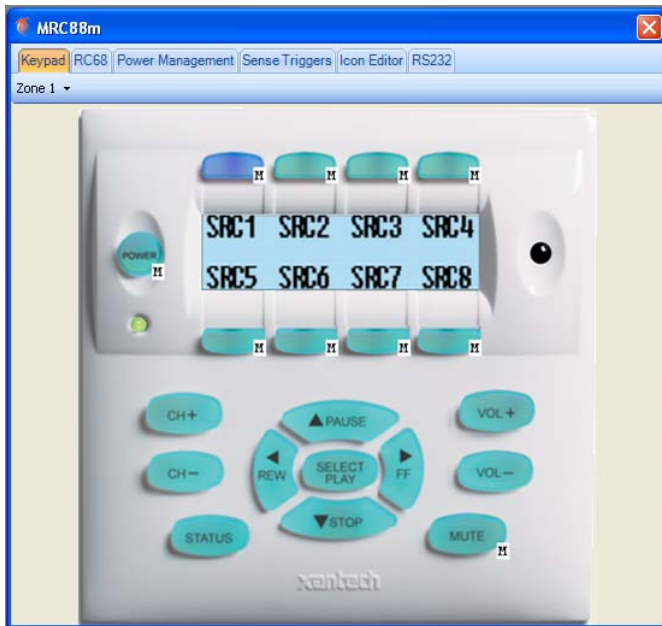
Select the New Project item under the File Menu (“File->New Project”).

Open the Audio/Video Distribution project type and select “MRC88m” or “MX88”.

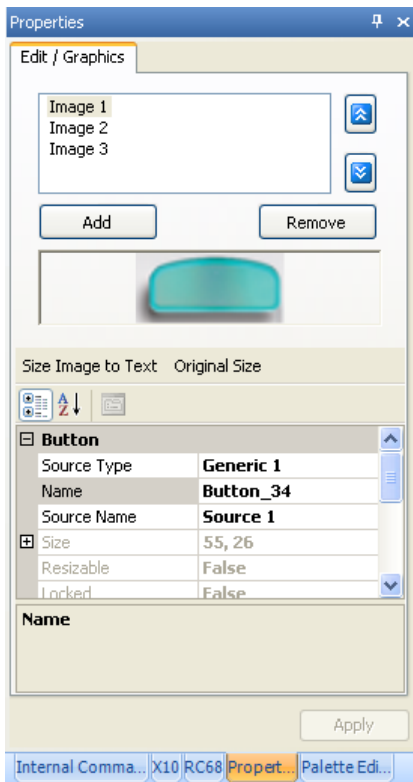


Select the “Blank Project” Option, and then click “OK”. You should now see the MX88/MRC88m Virtual keypad.

On the Virtual Keypad, select SRC1.



On the right-hand portion of the Dragon window, select the "Properties" tab near the bottom of the window.



The two fields in this Property sheet that are used by the Auto-Configuration feature are the "Source Type" and "Source Name".

"Source Type" is used to tell the MRKP2/2E what is the source device type, and "Source Name" is used to label the appropriate source button on the MRKP2/2E.

There are currently 8 source types supported by the system:

1. CD Player / Tape Player. (See Table 1 below.)
2. Satellite Receiver / Cable Receiver / Satellite Radio Receiver. (See Table 2 below.)
3. DVR / VCR. (See Table 3 below.)
4. Tuner (Radio). (See Table 4 below.)
5. MP3 (such as iPod) / Music Server. (See Table 5 below.)
6. DVD Player / Blu-ray Player. (See Table 6 below.)
7. Generic 1. (See Table 7 below.)
8. Generic 2. (See Table 7 below.)

Click the "Source Type" field in the "Button" property. This enables the drop-down box in the field to the right.

Click on the down arrow to expose the drop-down menu, and select MP3/Music Server. *This will be used to tell any connected MRKP2/2E's that Source 1 is a MP3/Music Server type of source, so that the MRKP2/2E's can display the appropriate page for this source.*

Now click on the text box to the right of the "Source Name" field. Type in "iPod". This text will be used to label the Source 1 button of the MRKP2/2E.

Button	
Source Type	MP3/Music Server
Name	Button_34
Source Name	iPod
Size	55, 26
Resizable	False
Locked	False
Caption On All Images	True
Bank Tracking	None
Keywords	BUTTON_34
Image	

Finally, click on the “Apply” button. *Note that no changes to these properties will be made until the “Apply” button is clicked!*

Ok, I think I get all this. How do I program the buttons on the MRKP2/2E?

You don't. You program the buttons on the MX88/MRC88m Virtual Keypad in Dragon.

The buttons on the MRKP2/2E are pre-programmed to execute the macros that you program under the MX88/MRC88m Virtual Keypad buttons.

Xantech LLC
13100 Telfair Avenue
Sylmar, CA 91342

Programming Instructions,
Universal Dragon MX88 with MRKP2/MRKP2E, VERSION A

© 2010 Xantech LLC. All rights reserved.

This document is copyright protected. No part of this document may be copied or reproduced in any form without prior written consent from Xantech LLC. Please note: this document may contain current, new and forthcoming products from Xantech and may include preliminary features, specifications and images. Due to Xantech's policy of continuous improvement the availability, design, features, specifications and prices of all products included in this document are subject to change without notice. Xantech LLC shall not be liable for consequences resulting from any product changes or operational, technical, or editorial errors/omissions made in this document.

Xantech® is a registered trademark of Xantech LLC. All other trademarks are the property of their respective owners.