

QUICK START INSTRUCTIONS

MRC88m & XDT

Multi-Room Controller and Tuner Integration

DESCRIPTION

This document describes how to integrate the XDT with the MRC88m, using Dragon-Drop software.

For this example, we are going to connect the XDT to the MRC88m as Source Input 1, and are going to use the COM RS232 port of the MRC88m for communications with the XDT.

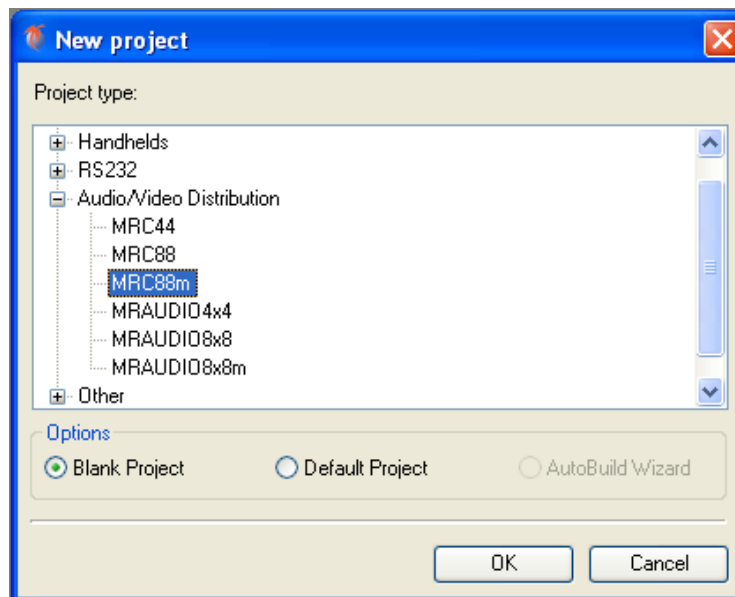
PHYSICAL CONNECTIONS

Connect the RED and WHITE analog stereo connectors from the XDT to the appropriate SOURCE 1 & SOURCE 2 inputs of the MRC88m.

Connect the RS232 port of the XDT to the COM port of the MRC88m, using the Null Modem cable included with the XDT. No additional adaptors are necessary.

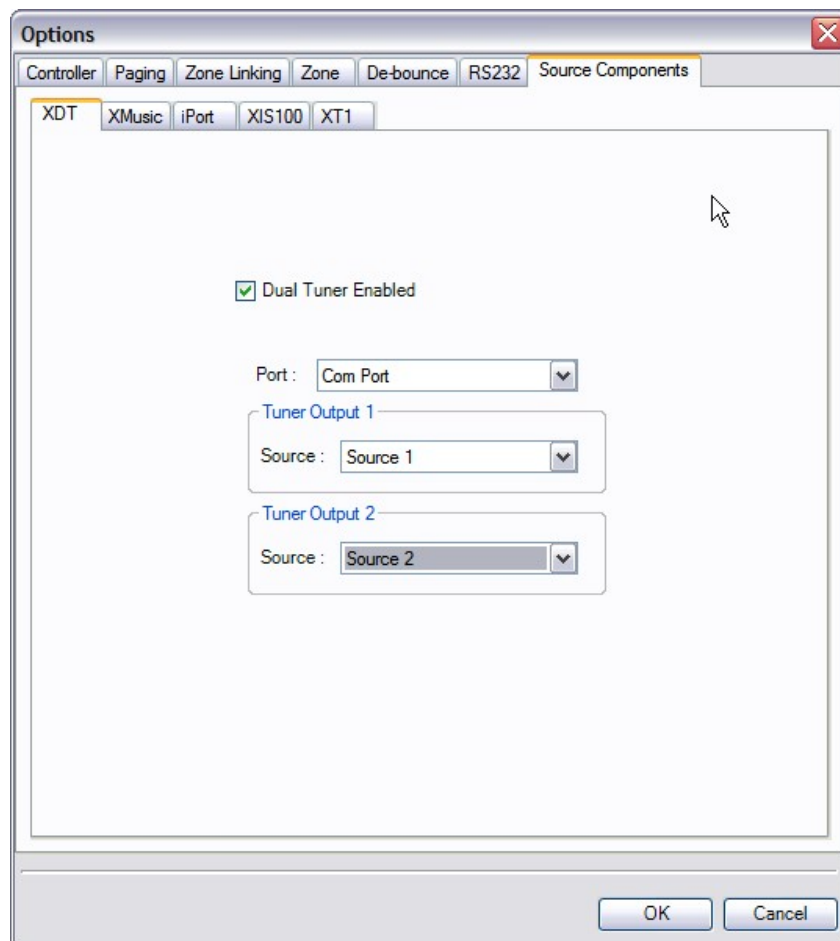
CREATING A NEW MRC88m PROJECT

- 1) Start Dragon-Drop.
- 2) Select the New Project item under the File Menu ("File->New Project").
- 3) Open the Audio/Video Distribution project type and select "MRC88m".
- 4) Select the "Blank Project" Option, and then click "OK". You should now see the MRC88m basic keypad.



ENABLING THE XDT DRIVER

- 1) Open the Project Options dialog box (“File->Project Options”).
- 2) Select the “Source Components” tab.
- 3) Select the “XDT” tab.
- 4) Click the “Dual Tuner Enabled” check box to enable XDT.
- 5) In the “Port” field, make sure that “Com Port” is selected. This lets the driver know how the XDT is connected to the MRC88m.
- 6) Select the two appropriate tuner outputs (Source Inputs on MRC88m) that the tuner will connect to the on MRC88m.

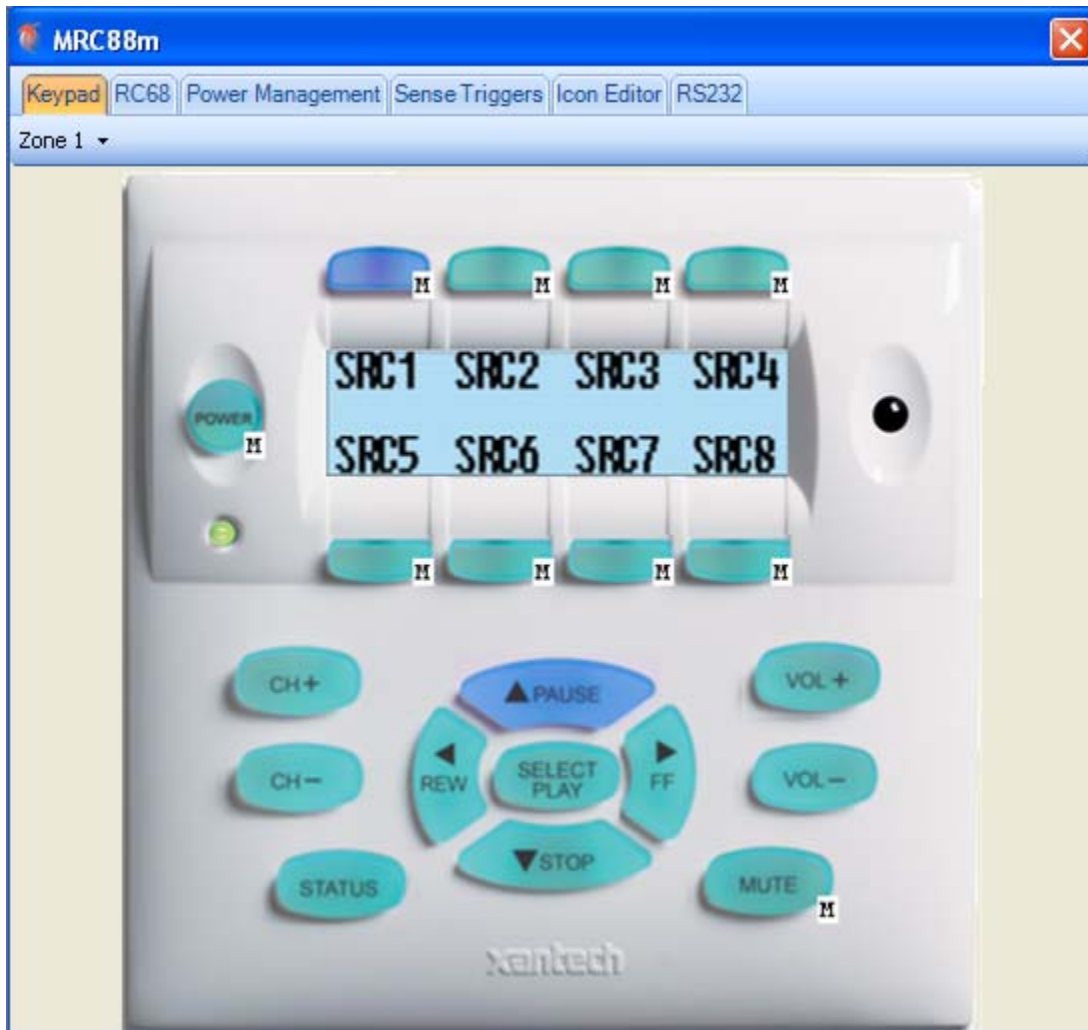


At this point you have successfully told the MRC88m that an XDT is connected, and how it is connected.

CONFIGURING THE MRC88m KEYPAD TO CONTROL THE XDT

The XDT is controlled by using the new “Metadata” Internal Commands. These new commands can be used to control the XDT, XT1, XIS100, the XMusic, and the iPort. See Figure 1 at the end of this document that describes how each Metadata internal command maps to the XDT function.

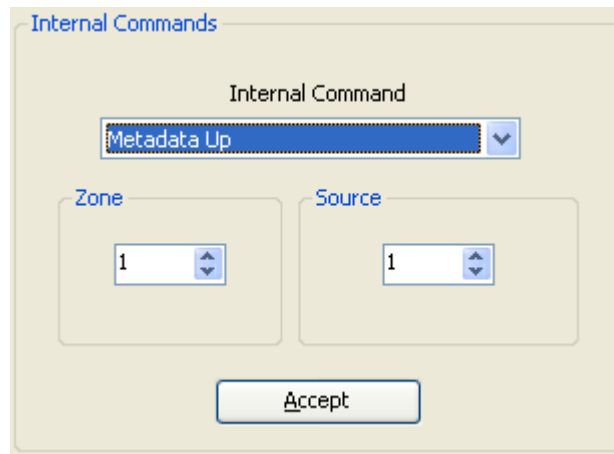
- 1) Just above the Virtual Keypad (under the “Keypad” tab), select “Zone 1” from the drop-down box.
- 2) On the Virtual keypad, select “SRC1”.
- 3) On the right-hand portion of the Dragon window, make sure that the “Internal Commands” tab near the bottom of the window is selected.
- 4) On the Virtual Keypad, select the “↑ PAUSE” button.



5) In the “Internal Commands” window, select the “Metadata Up” command.

6) In the “Zone” area, select the current zone, Zone 1.

7) In the “Source” box, select “1”, since the XDT we want to control is connected to Source 1.



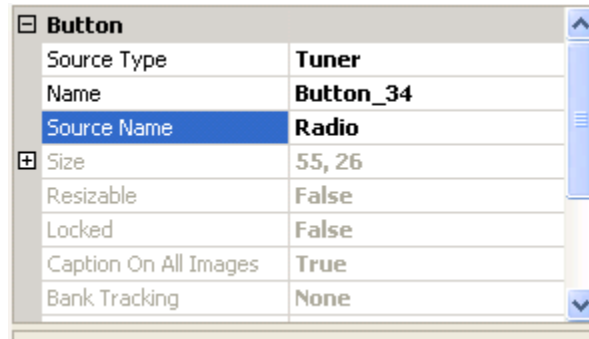
8) Click the “Accept” Button.

You have now successfully programmed the “↑ PAUSE” button in Zone 1 perform the “Frequency Up” function of the XDT. Continue programming the rest of the MRC88m keypad buttons to the other desired XDT functions. (See Figure 1 at the end of this document that shows how the Metadata commands map to an XDT function.

Please pay attention to Figure 2 at the end of this document that shows how buttons on the SPLCD-MRC-KP Tuner page to map the MRC88m Virtual Keypad buttons.

CONFIGURING SOURCE 1 CORRECTLY FOR THE “AUTO CONFIGURATION” FEATURE OF THE SPLCD WHEN CONNECTED TO A MRC88m

- 1) On the Virtual Keypad, select SRC1.
- 2) On the right-hand portion of the Dragon window, select the “Properties” tab near the bottom of the window.
- 3) Click the “Source Type” field in the “Button” property. This enables the drop-down box in the field to the right.
- 4) Click on the down arrow to expose the drop-down menu, and select Tuner. *This will be used to tell any connected SPLCD’s that Source 1 is a Tuner type of source, so that the SPLCD can display the appropriate page for this source.*
- 5) Now click on the text box to the right of the “Source Name” field. Type in the name of this source, such as “Radio”. This text will be used to label the Source 1 button of the SPLCD.



- 6) Finally, click on the “Apply” button. *Note that no changes to these properties will be made until the “Apply” button is clicked!*

Figure 1: Below, Mapping the Internal Metadata commands to XDT functions

Metadata Internal Command	XDT Function
Metadata Up	Seek Up
Metadata Down	Seek Down
Metadata Next Track	Preset Up
Metadata Prev Track	Preset Down
Metadata Pause	Preset 01
Metadata Fast Forward	Preset 02
Metadata Stop	Preset 03
Metadata Rewind	Preset 04
Metadata Up Fast	Preset 05
Metadata Down Fast	Preset 06
Metadata Shuffle	Preset 07
Metadata Repeat	Preset 08
Metadata Menu Back	AM
Metadata Select	FM

Figure 2: Below, Mapping the “Tuner” page buttons of the SPLCD-MRC-KP to the MRC88m Virtual Keypad buttons

SPLCD Button	Maps To: MRC88m Keypad Button
Preset 1	Pause Tier 2
Preset 2	Fwd Tier 2
Preset 3	Stop Tier 2
Preset 4	Rew Tier 2
Preset -	Ch-
Preset +	Ch+
Tune -	Stop
Tune +	Pause
Vol Up	Vol +
Vol Down	Vol -
Mute	Mute
Power	Pwr



Xantech Corporation
 13100 Telfair Avenue
 Sylmar, CA 91342

Instr, Quick Start, MRC88m & XDT Tuner

© 2009 Xantech Corporation, Document #08905284A

This document is copyright protected. No part of this manual may be copied or reproduced in any form without prior written consent from Xantech Corporation.

Xantech Corporation shall not be liable for operational, technical, or editorial errors/omissions made in this document.