

***XDT-MRC  
Integration:***

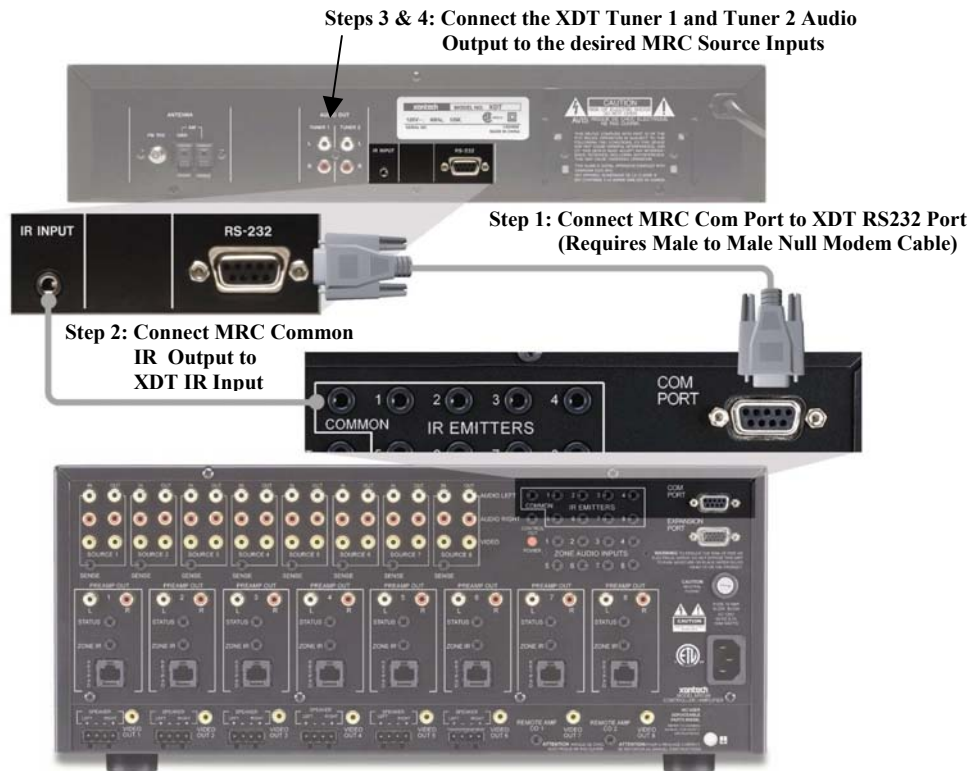
The XDT Dual Tuner when integrated with the MRC88 or MRAUDIO8x8, makes for the perfect Multizone application allowing for full bi-directional interface between the products providing easy to read Station display as well as Preset and Mode status readout on both; the Standard MRCKP Keypads and the full line of SmartPad LCD™ Controllers in every Zone.

Packed with two discrete Tuners and up to 120 Presets, the XDT provides listening features and flexibility for the entire home.

***Connecting to  
the MRC88:***

The XDT is capable of being controlled by either RS232 and/or IR commands. **RS232 must always be used** when incorporated in conjunction with the MRC88 and MRAUDIO8x8, as this is what enables the bi-directional feedback directly on the Keypads and SPLCD Controllers. Connect the units as described below:

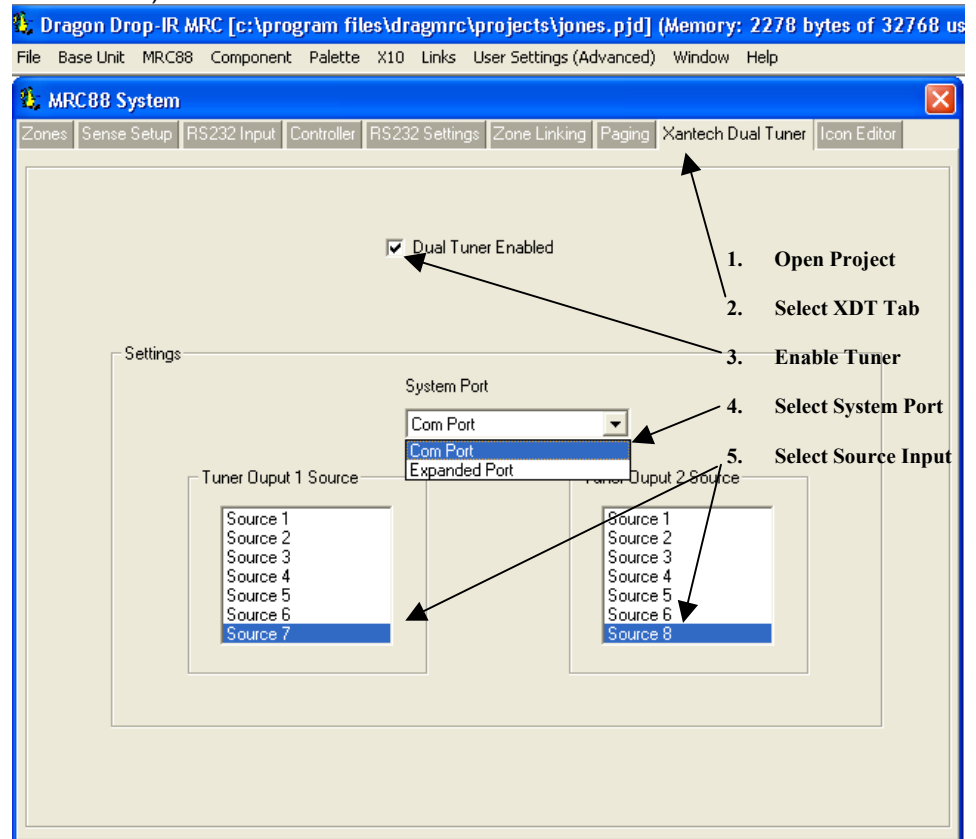
1. Using a Male-to-Male, NULL MODEM cable (Xantech Part No. 05913560), connect the COM PORT on the rear of the MRC88 (or MRAUDIO8x8) to the RS232 Input located on the rear of the XDT. **Note:** If using the EXPANDED Port on the MRC or MRAUDIO8x8, you will also need the 15-pin to 9-Pin serial adaptor cable (Xantech Part No. 05913665) as well as the Null Modem cable.
2. (SPLCD Only): Using a 3.5mm Mono Mini to Mono Mini cable, connect the Common IR Output of the MRC88 (or MRAUDIO8x8) to the IR Input connection located on the rear of the XDT. **Note:** Only required when SPLCD controllers are used in the system.
3. Connect TUNER 1 Left and Right Output to desired Source input on the MRC88 or MRAUDIO8x8
4. Connect TUNER 2 Left and Right Output to desired Source input on the MRC88 or MRAUDIO



**Software  
Configuration:**

The following is step by step instructions for enabling the XDT Dual Tuner within the Dragon Drop-IR MRC software.

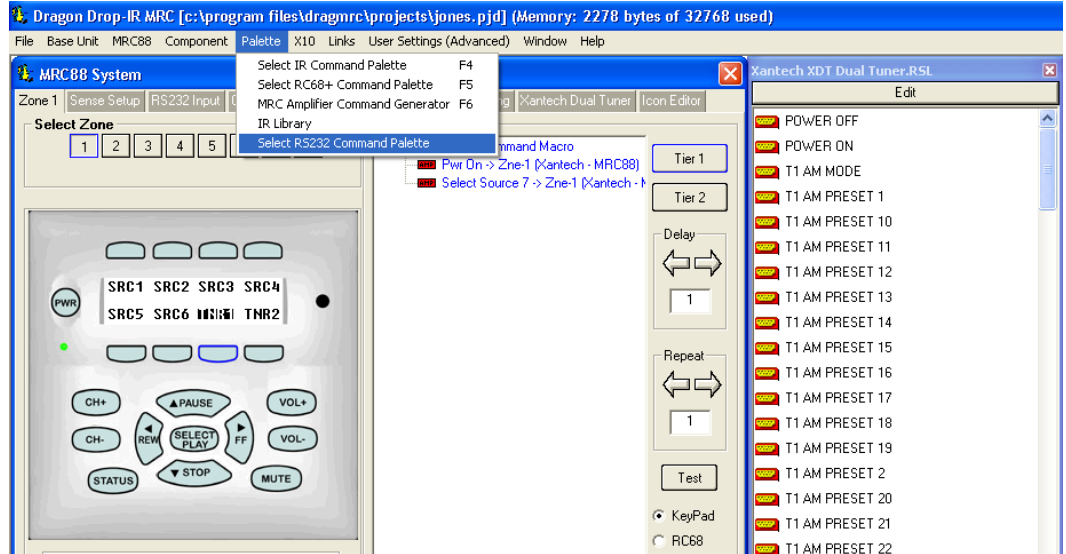
1. Open the MRC88 or MRAUDIO8x8 project.
2. Click on the **Xantech Dual Tuner Tab**
3. Select **Dual Tuner Enabled**
4. Select the **System Port** to be used on the MRC88 or MRAUDIO8x8 (i.e. Com Port or Expanded Port).
5. Select the Source Inputs that Tuner 1 and Tuner 2 of the XDT are connected to on the MRC88 or MRAUDIO8x8 Controller (Step 4 under *Connecting to the MRC88*)

**Software  
Programming:**

Below is an example on how to program the MRC88 or MRAUDIO8x8 keypads for use with the XDT Dual Tuner using the RS232 Palette.

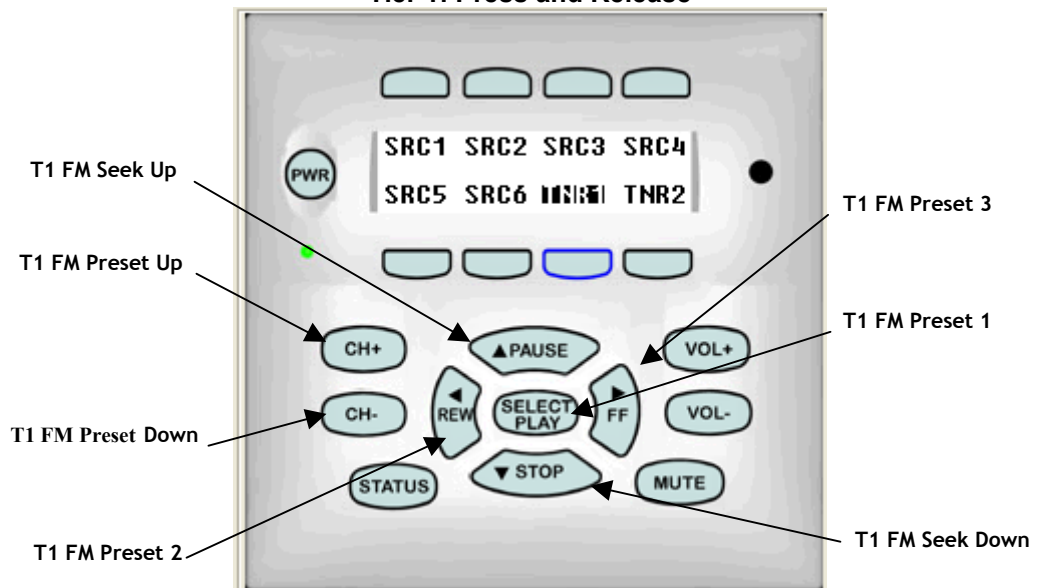
1. Click on the ZONES tab so the Virtual MRC Keypad is displayed.
2. Select Zone 1
3. Click on Palettes and Select RS232 Command Palettes from the Drop-Down menu.
4. Select Xantech XDT Dual Tuner from the list of files.
5. Select the TNR1 Source button on the Virtual Keypad.
6. Start placing TUNER 1 commands on the Virtual Keypad
7. Select Tier 2 to place additional Tuner 1 commands

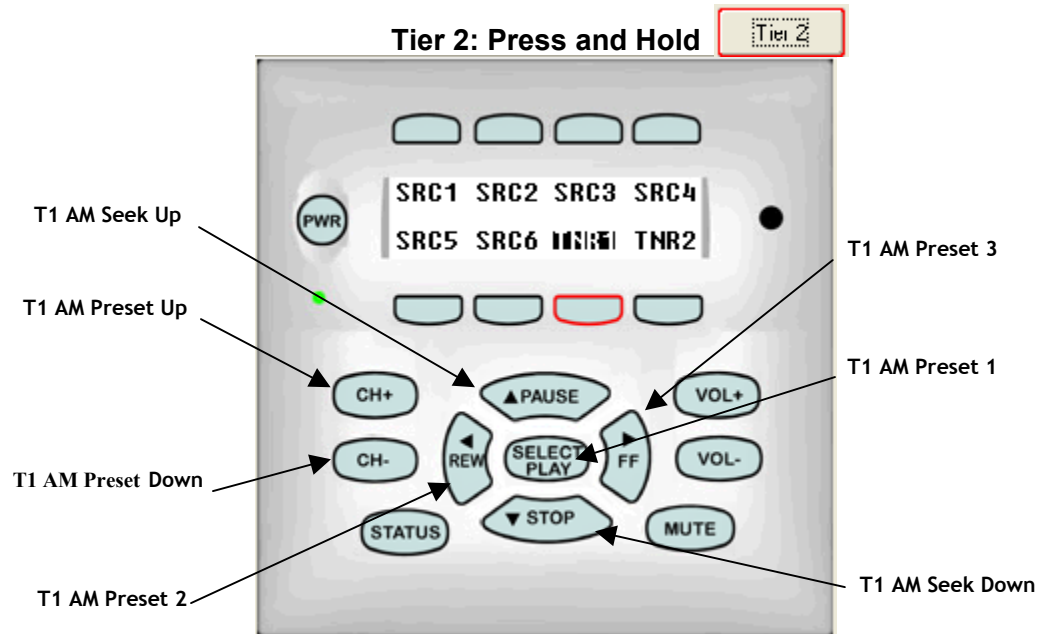
8. Select the TNR2 Source Button and repeat steps 6 & 7 above.
9. When using a SmartPad LCD™ with the system, unlimited commands can be used for making discrete Preset Commands (i.e. Rock, Jazz, etc...). For an additional 23 commands to be used, click on the RC68 button to access.
10. Copy this keypad to all other Zones (right-click on any button and select PUCH ALL SYSTEM LEVEL).



**Example of Programming: Place the RS232 commands as shown below**

**Tier 1: Press and Release**





## Programming RC68 Commands: For use with SPLCD

